

# Honey Bee Swarms

## Why do honey bees swarm?

Swarming is a natural process, occurring in the spring, by which a new honey bee colony is formed. The queen bee leaves the colony with thousands of worker bees (the swarm) in search of a new home.

## Are swarms dangerous?

No. However, if the swarm is disturbed, individual bees may sting. Swarms are generally very docile, as they have gorged on honey, have no hive to defend, and are preparing to fly to a new home.

## What should I do?

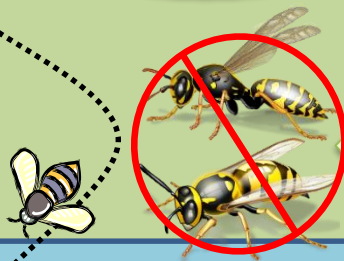
Do not disturb the swarm  
Do not spray the swarm with anything  
Take a photo of the swarm with your phone

Swarms vary in size from a softball to a basketball. They will rest on trees, fences, walls, or even chairs!



Wasp and Yellow Jacket.

This is a honey bee!



## Who do you call?

**Back Forty Bees**

[www.backfortybees.com](http://www.backfortybees.com)

757.745.9081

## Information to have

- Address & phone number
- Location on property
- Swarm height from ground
- Text me photos: close-ups and from a distance to show location
- Swarm size (approx.)

We come, collect the bees, and take them to a new home.

