

Below are details for picking up your package(s) on **March 17th**.



Check your email on Saturday in case there is a last-minute change!

Pickup date is weather dependent.

The installation demonstration begins at 8:30 am. Those who want to see the installation demo please arrive by 8:15 – all others see the pickup time info below.

1. Pick up time is from 9:00 to 10:00.

Activity	Time
Installation Demo	8:30 – 9:00
Last Name Starts A - J	9:00 - 10:00
Last Name – K - R	10:00 – 11:00
Last Name – S - Z	11:00 – 12:00

If you ordered items from [Tasha's Own](#) or wish to browse items for sale, please do this before picking up your bees.

Location: 3312 N Riverside Dr, Lanexa, VA 23089 (NEW THIS YEAR)

2. Parking:

- See the map on the following page.

How to Bring Your Bees Home:

- The package may be gently brushed to remove bees, but there may be a straggler or two on the cage. You can place the package in your car (air-conditioned), trunk, or in the back of a truck FOR TRANSPORT ONLY. Once you reach your destination the package must be stored per below. How you transport them is a personal decision but remember to provide ventilation and do not overheat the bees.

How to Store Your Package:

- If you need to store your package of bees for a short time, please keep them in your cool garage. Make sure the bees are not exposed to excessive heat or cold, loud noise, or unusual vibrations. You do not need to spray the bees with sugar syrup (1-part sugar, 1 part water), though some people choose to. The bees have a can of sugar water with them in the cage and it is all they need for a few days.
- **DO NOT:** Do not put the cage in the hive to store them. Do not store them on a porch or other area exposed to direct sunlight. Do not store them where animals may disturb them.

Other Useful Info:

- An [excellent guidance document \(including photos\) on how to install package bees](#) has been developed by NC State University for reference
 - Watch a video in advance - [this one](#) or [my video on my website](#).
- Several people have asked about what equipment to buy. Please see my [Beekeeping Equipment to start with Blog](#) for recommendations.

Tasha's Own — our partner and host for the package bee pick up.

Tasha's Own will have a wide variety of products available to purchase on the pickup date. To pre-order from Tasha's Own, please email them at tashasown@gmail.com and visit the website



About Our Partner



Tasha's Own is a family owned and operated venture of love and commitment to reviving the lost arts. Not only do we strive to farm in a sustainable manner, we are committed to utilizing time-honored "old fashioned" methods as well. These methods both enhance the lives of our animals and maintain our connection to the earth. By offering and promoting our products and educational ventures nationwide, we are supporting and encouraging other small farms. It is our belief that small farms are the backbone of our culture and our country; producing healthier food, creating superior products and fostering healthy economies and communities. By choosing one of our tonics, soaps, or other farm crafted goods, you are taking a step towards sustainability, simplicity, and health.



@tashasown

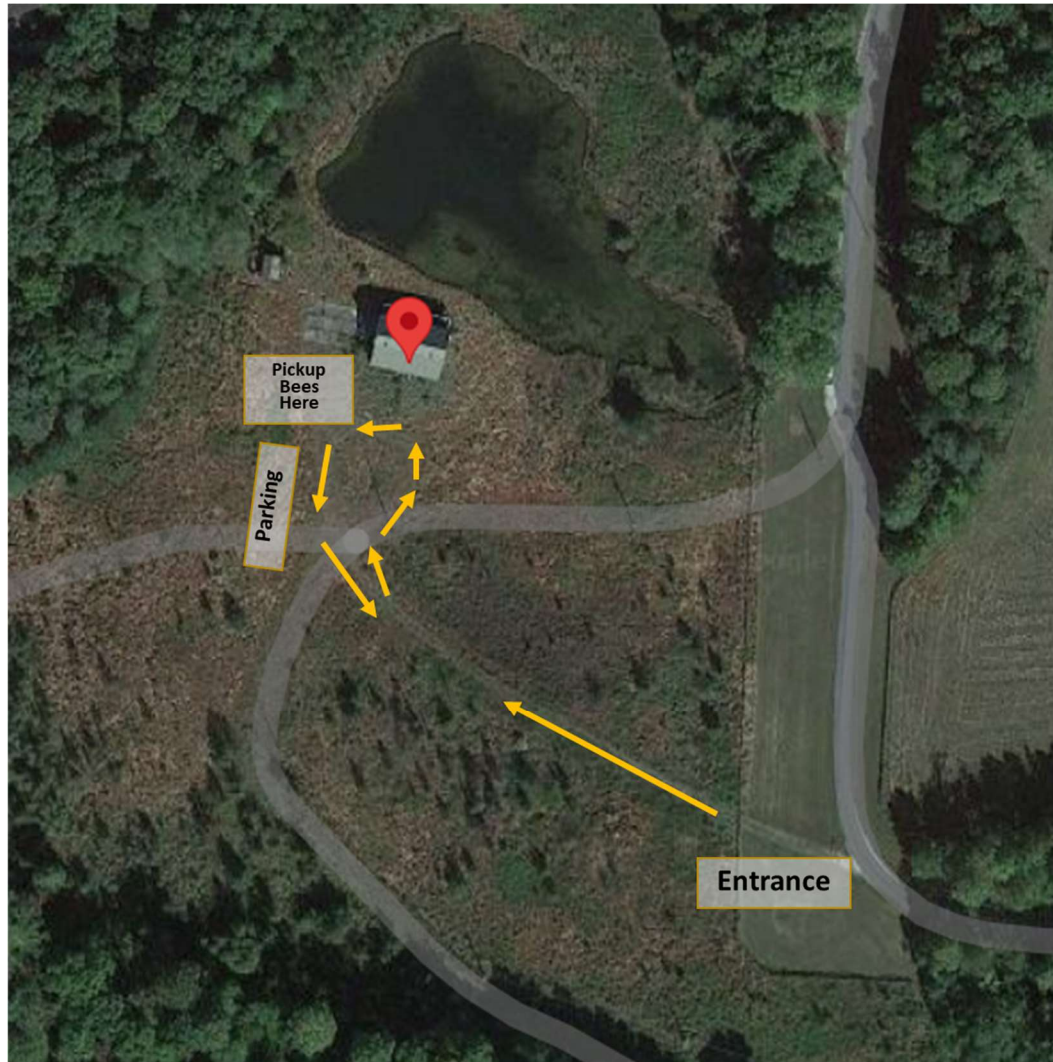


@tashasown



Tashasownherbarium.com

Parking and Pick Up Map



Location: Tasha's Own

3312 N Riverside Dr, Lanexa, VA 23089

[Google Maps Link](#) for directions

Pick up Directions

1. Find an open parking spot.
2. At the pick up you will see a table with someone attending it. Provide your name and we will hand you your package(s) of bees.
3. Return to your vehicle and exit.

The entrance driveway is narrow, please be careful and considerate as you enter and exit.

The driveway speed limit is 15MPH

Entering vehicles have the right of way.

Exiting vehicles must stop, stay on the gravel, but move to the edge and allow the entering vehicle to enter/pass.